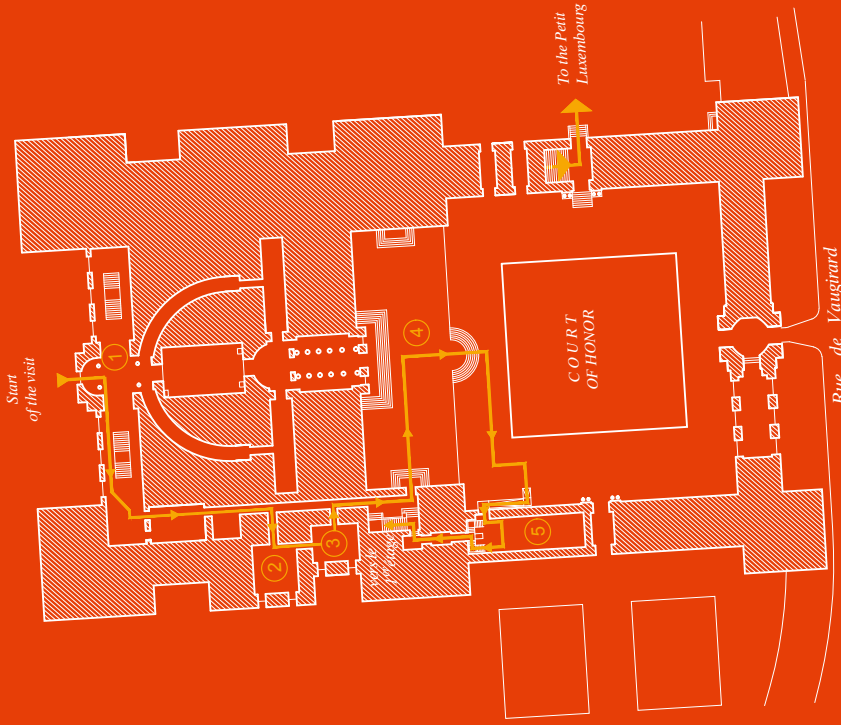


FOR THE EUROPEAN
HERITAGE DAYS

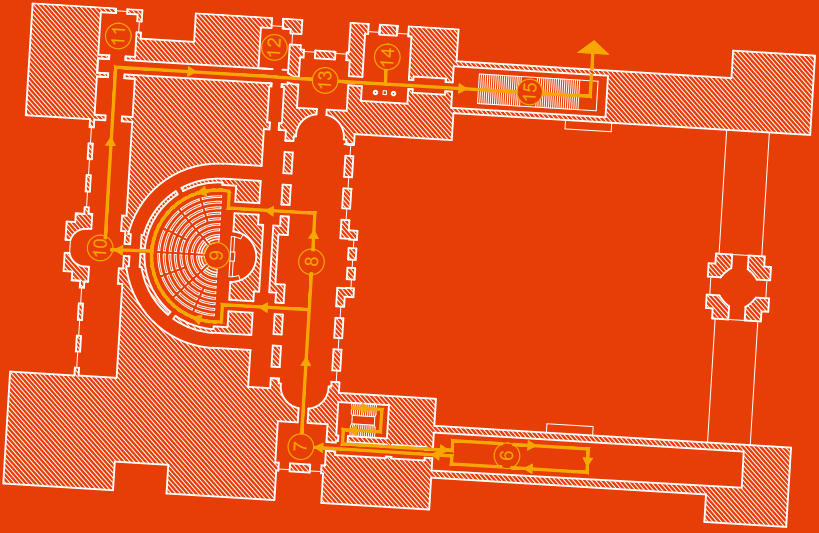
www.senat.fr



PLAN OF THE LUXEMBOURG PALACE EUROPEAN HERITAGE DAYS



PLAN OF THE GROUND FLOOR



PLAN OF THE 1ST FLOOR





Welcome to the French Senate on these European Heritage Days. To get to know the Senate better, **answer this quiz**. You may use your parents' brochure to answer the most difficult questions and ask people working here: they will be happy to satisfy your curiosity.



QUESTION 1

DO YOU KNOW WHO THE PRESIDENT OF THE SENATE IS?



QUESTION 2 (ROOM NUMBER 2)

GOLDEN BOOK ROOM

The bust in this room represents the woman who had the Luxembourg Palace built in the 17th century. **Who is she?**



QUESTION 3 (ROOM NUMBER 3)

OFFICE OF A VICE-PRESIDENT OF THE SENATE

How many vice-presidents are there in the Senate?

8

10

12



QUESTION 4 (ROOM NUMBER 5)

ROOM R ____ M _____

Which former President of the Senate gave his name to an old chapel turned into a multimedia room?



QUESTION 5 (ROOM NUMBER 6)

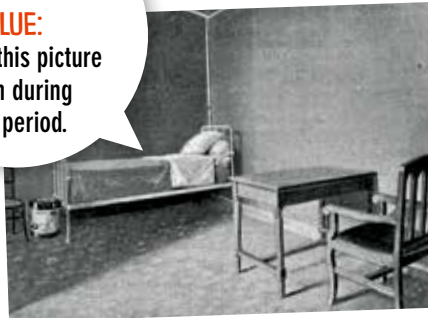
LIBRARY ANNEX



In 1899, the Senate became the High Court of Justice, in charge of judging attacks made against the security of the State. **What was the purpose of the library Annex then?**



CLUE:
look at this picture taken during that period.



QUESTION 6 (ROOM NUMBER 7)

VICTOR HUGO LOUNGE

Which of these books was not written by **Victor Hugo**?

- Les Misérables Notre-Dame de Paris Madame Bovary

QUESTION 7 (ROOM NUMBER 8)

CONFERENCE HALL

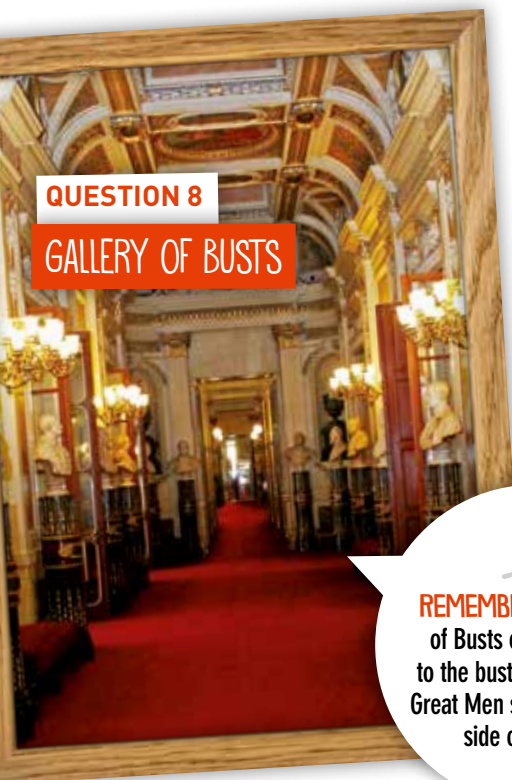
Public Sénat, shown here, is a French TV channel shared with another channel called “LCP – AN”. Public Sénat deals with matters relating to the Senate.

What does “LCP-AN” stand for?



L
.....
G
.....
P
.....

A
.....
N
.....



QUESTION 8

GALLERY OF BUSTS



Riddle... “I am located next to the plaque honouring the French Women senators who resisted the enemy during the Second World War. I have a strange moustache, and French children go to school thanks to me.”... **Who am I?**

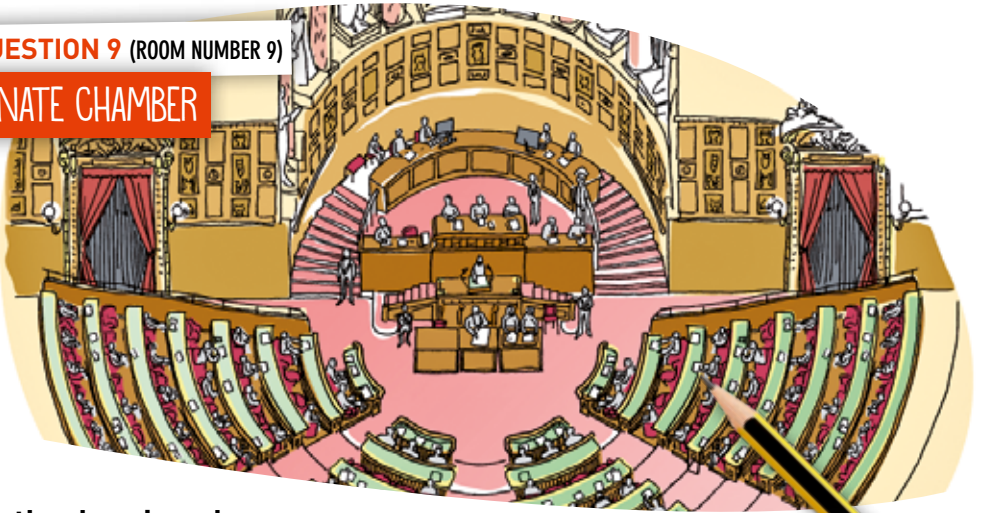


REMEMBER: The Gallery of Busts owes its name to the busts of 19th century Great Men situated on each side of the hall.

.....

QUESTION 9 (ROOM NUMBER 9)

SENATE CHAMBER



On the drawing above:

- 1 **Put a cross** where the President of the Senate sits.
(The President of the Senate – or one of the 8 Vice-Presidents – is the one who leads the debates).
- 2 **Draw a square** where the minute-takers sit (These are civil servants who are responsible for writing down everything that is said within the Senate Chamber. They take turns at regular intervals.)

QUESTION 10 (ROOM NUMBER 10)

LIBRARY

Circle the correct answer. Who painted Les Limbes (“Limbo”) (1841-1846) on the ceiling of the dome, at the centre of the Library?



Pablo Picasso



Eugène Delacroix



Léonard de Vinci

QUESTION 11 (ROOM NUMBER 11)

QUESTEUR'S OFFICE



CLUE: There are as many Questeurs as there are musketeers in the title of Alexandre Dumas's most famous novel.

This office is used for the weekly meetings of the Conseil de Questure, which is the French Senate's treasury and administrative body. The members of this department, called Questeurs, are elected by their colleagues to manage the Senate's administrative matters and to run its budget.

How many Questeurs are there?



QUESTION 12 (ROOM NUMBER 13)

MESSENGERS OF STATE LOUNGE

Who is the child represented in the medallion located in the ceiling, close to the door giving access to the Conference hall:

- Napoleon II, known as "the Aiglon"
- Napoleon Bonaparte when he was a child
- Harry Potter



QUESTION 13 (ROOM NUMBER 14)

THE MEDICIS COUNTER

Before being used as the Comptoir Médicis, among other things, what was the function of this room?

- A bathroom
- A sports room
- The Queen's bedroom



QUESTION 14 (ROOM NUMBER 15)

MAIN STAIRCASE



On both sides of the main staircase, you can notice tapestries on the walls. These tapestries were woven in a world-famous workshop, created in 1601 by Henry IV. What is the name of this tapestry workshop?

- Gollums
- Gobelins
- Goblet

QUESTION 15 (ROOM NUMBER 15)

MAIN STAIRCASE

Which **animal** do you think is represented along the staircase?

.....



BEWARE:
don't be deceived
by appearances!

BONUS QUESTIONS

BONUS QUESTION 1

Why is the Senate garden called the Luxembourg Garden?



.....

.....

.....

BONUS QUESTION 2

Question about the Parliament:

what is the navette parlementaire (the “parliamentary shuttle”)?

- The bus used by members of Parliament
- The “back and forth” readings of a bill of law needed for deputies and senators to agree on a common text
- The space shuttle linking the Senate to planet Mars



W

e wish you a pleasant Heritage Day!
**Don't forget to ask for your surprise
at the end of the visit.** If you were not
able to answer every question, don't hesitate to ask
the various people working here.



DISCOVER THE JUNIOR SENATE WEBSITE



Junior
JEUNES CITOYENS À VOS SOURIS !

TWO
LEARNING
PATHWAYS
adapted
to children
aged 6-12
and 13+

About fifteen
different
GAMES
to learn while
having fun

ARTICLES
on civic and institutional
instruction, the history
and the role of the Senate
as well as senators' news

DOZEN
OF VIDEOS
to complement
children's knowledge
of the Senate

A DEDICATED
SPACE
for teachers
and parents



www.junior.senat.fr



Instagram :
[instagram.com/Senat_fr](https://www.instagram.com/Senat_fr)

Junior
JEUNES CITOYENS À VOS SOURIS !